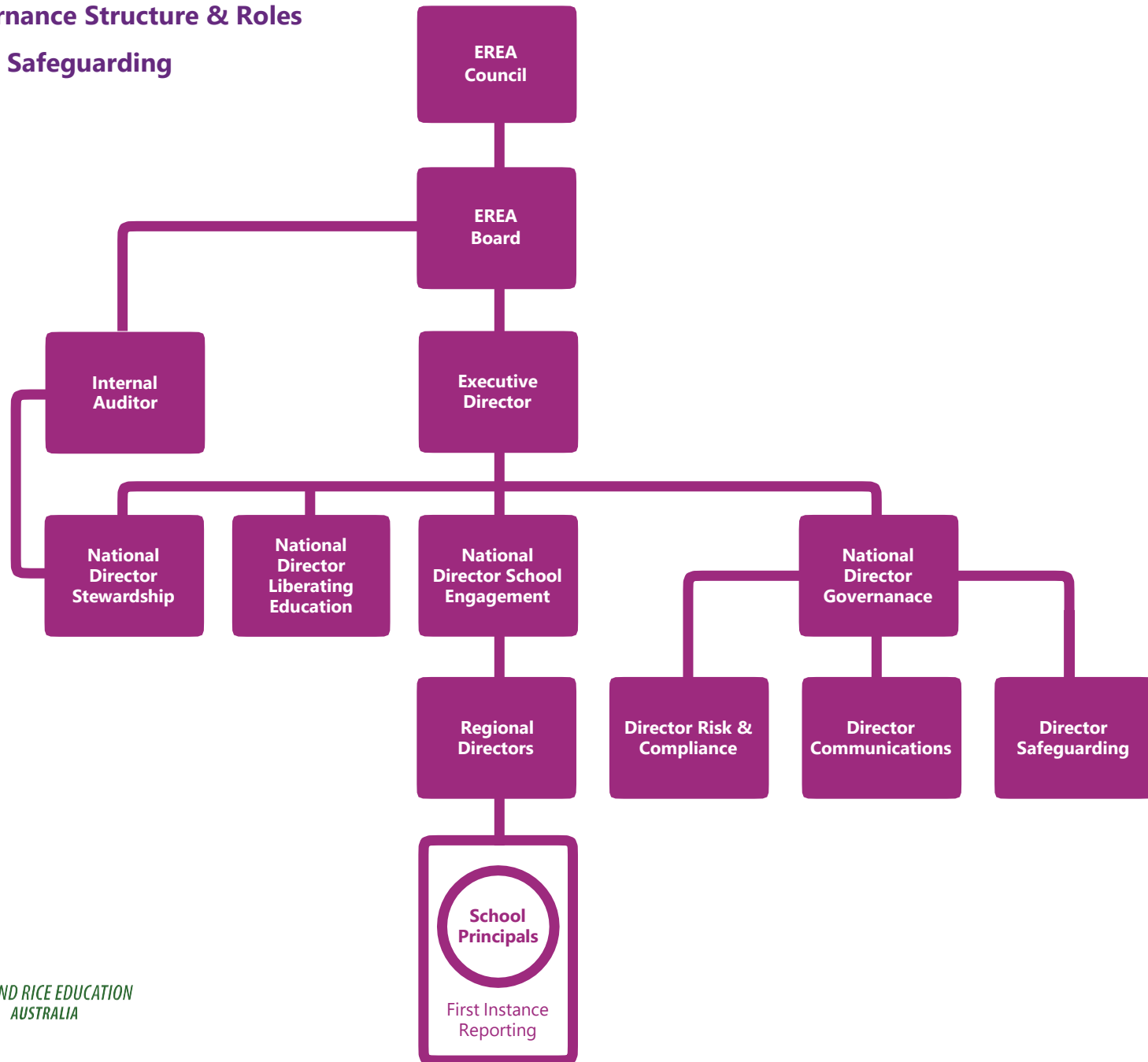


EREA Governance Structure & Roles

Supporting Safeguarding



Safeguarding Responsibilities

EREA Council

Trustees of Edmund Rice Education Australia

EREA Board

Has responsibility for approving the Child Protection Policy.

Ensures that appropriate procedures and guidelines are in place to assist all to comply with the policy.

Executive Director

Ensures that sound governance and management practices are applied and that EREA meets the highest standards in relation to the protection of children.

Ensures those delegated to employ in EREA, screen employees in accord with relevant State/Territory legislative requirements.

Ensures written reports of abuse or potential abuse of a child are received and promptly reported to police and the relevant authorities.

EREA Executive

Has the responsibility of working collaboratively with the Executive Director to ensure that sound governance and management practices are applied and that EREA meets the highest standards in relation to the protection of children. The EREA Executive includes the Executive Director, the Deputy Executive Director, the National Director - Identity and Liberating Education and the National Director - Stewardship and Resources.

Director of Safeguarding

Ensures that EREA schools and entities have in place policies and procedures that support the safety, protection and wellbeing of children and young people under their care.

Ensures that EREA's Child Safe Standards Framework is fully understood and implemented.
Ensures that EREA schools and entities meet their obligations and legislative requirements as defined in the framework.

Supports EREA and schools/entities in enhancing a culture of care and safety for all, especially for children and young people.

Reports to the EREA Board through the Executive Director.

Deputy Executive Director / Regional Directors / Chair Youth+

Ensure that EREA schools and entities in their region maintain the highest standards in relation to the protection of children.

Ensure written reports of abuse or potential abuse of a child are received and promptly reported to police, the Executive Director, the Director of Safeguarding and the relevant authorities.

Principals

Responsible for adhering to the Child Protection Policy.

Ensure that Child Protection programs developed for all EREA schools as part of the EREA national Governance, Risk, Compliance and Policy are implemented, managed and reported.

Receive written reports regarding abuse or potential abuse of a child, inform the police, the relevant state authorities, the Regional Director and the Director of Safeguarding who will brief the Executive Director.

Advise the School Board of significant Child Protection issues.

Director Governance and Strategic Engagement / Director Risk and Compliance /
Director Communication and Global Engagement / Internal Auditor

Support the Director of Safeguarding in areas of governance responsibilities, risk and compliance and communication strategies in relation to child safety and protection.

